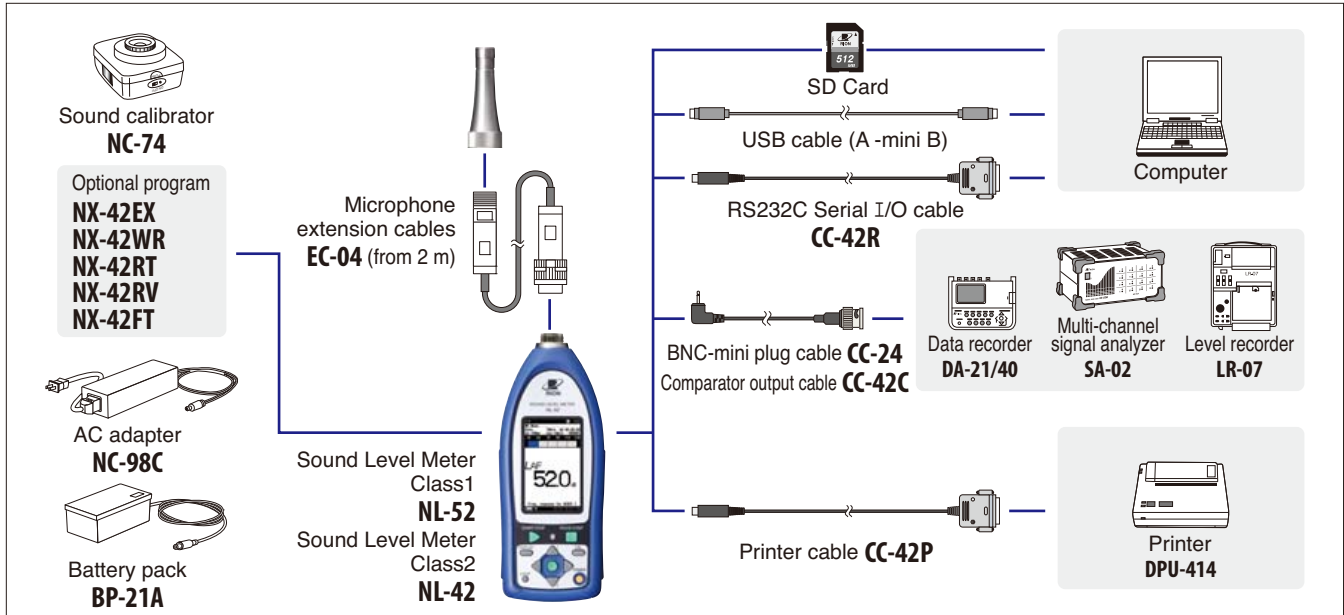


System construction



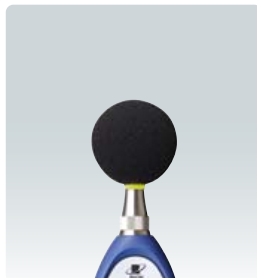
Peripheral devices

All-weather windscreen WS-15



This windscreen is designed for outdoor installations. It helps to reduce wind noise and is equipped with rainproof features that satisfy the **IPX3 water-resistant** specifications. It is used with a microphone extension cable. (Mounting adapter WS15006 required separately)

Rain-protection windscreen WS-16



This screen protects the microphone against rain for a short period of time. The rainproof performance of this windscreen is designed to satisfy the **IPX3 water-resistant** specifications.

Sound calibrator NC-74



This Sound calibrator conforms to IEC 60942 (JIS C 1515), Class 1, providing a level of performance sufficient for calibrating the precision sound level meter.

Specifications	
Nominal acoustic pressure level	94 dB
Nominal frequency	1 kHz

Tripod

This stand can be used for general acoustic measurements. The sound level meter and microphone can be mounted on the stand.



ST-80

ST-81

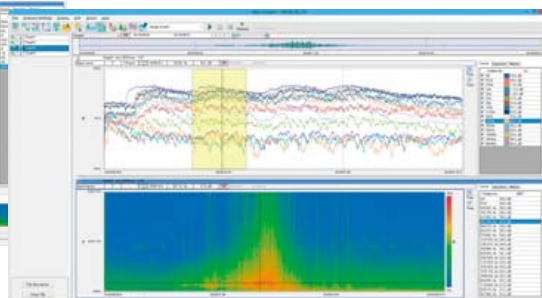
(For All-weather windscreen WS-15, use of ST-81 is recommended.)

Waveform analysis software AS-70

This software allows you to load stored WAVE files from a RION sound level meter, vibration meter or data recorder. Octave, 1/3 octave, and FFT analyses can then be performed. Playback of the real sound files is also possible.



Frequency analysis screen



Frequency analysis screen

Specifications		
Waveform analysis	Calculations	Maximum value, Minimum value, Average value, RMS, Variance, Differential and integral calculus, HPF, LPF
Frequency weighting		Z, A, C, G, C to A, L _v (vertical) (JIS C 1510), L _v (horizontal) (JIS C 1510)
FFT analysis	Analysis points	32 to 65 536 points
	Display data	Power spectrum, Power spectral density, Spectrogram
Time weighting		10 ms, F, 630 ms, S, 10 s
Octave band analysis	Applicable standards	IEC 61260 Class 1 (JIS C 1514 Class 1)
	Analysis frequency	Octave band 0.5 Hz to 16 kHz (16 bands)
	range	1/3 octave band 0.4 Hz to 20 kHz (48 bands)

Recommended computer specifications

CPU	Intel Core™2 Duo 2 GHz or higher
RAM	2 GB or more (4 GB recommended)
HDD	20 GB free or more (100 GB or more recommended)
DISPLAY	XGA (1 024 × 768) or more
OS	Microsoft Windows XP Professional 32 bit, 7 Professional 32 bit / 64 bit, 8 Pro 32 bit/64 bit